

Directions To WIT

Unit 102 The Colosseum (C/O Century Way), Century City, Cape Town



Directions from Cape Town

Take the N1 direction Paarl.

After the Koeberg Interchange (M5), keep to the left.

Take the Sable road off-ramp (exit 10).

At the T junction, turn left into Sable Rd following signs to Century City & Ratanga Junction.

The road takes a 90 degree bend and becomes Ratanga Rd.

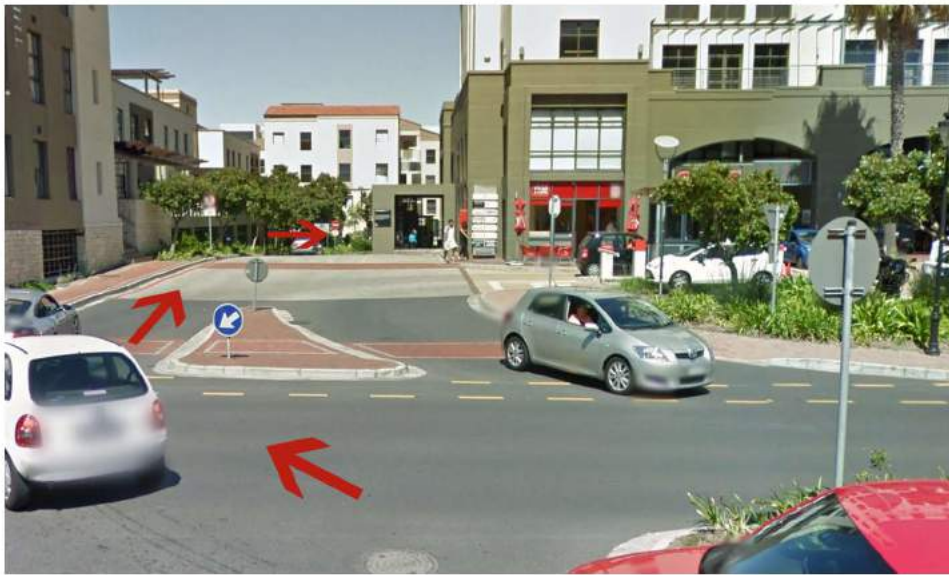
Take the first right at the traffic lights into Century Boulevard, followed by an immediate first exit left at the circle (Colosseum Building and Woolworths Food will be on your right).

Turn right at entry to the Colosseum (before second traffic circle).

Do not enter parking at Vida e café - keep left down the ramp and then right into the parking garage.

Sign in and then proceed to the top floor to park into bay P3-112 (as you come to the top of the ramp) marked with a WIT sign.

We are located on the same floor as the parking bay and you can be buzzed in by pressing 102 on the panel by the door.



Directions from Paarl/Durbanville

Take the N1 direction Cape Town.

Keep to the left after the N7.

Take exit 10, the Sable Road off-ramp and turn right and continue.

The road takes a 90 degree bend and becomes Ratanga Rd.

Take the first right at the traffic lights into Century Boulevard, followed by an immediate first exit left at the circle (Colosseum Building and Woolworths food will be on your right).

Do not enter parking at Vida e Café - keep left down the ramp and then right into parking garage.

Sign in and then proceed to the top floor to park in bay P3-112
(as you come to the top of the ramp) marked with a WIT sign

We are located on the same floor as the parking bay and you can be buzzed in by pressing 102 on the panel by the door.